

# ZM25-EAZ

## ZM tubular motor user instruction



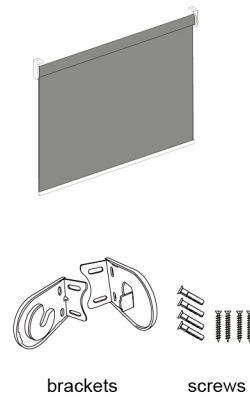
Thank you very much for choosing our motorized shades. Before installing the shades, please read through this manual carefully.

This manual is applicable to the electric roller shades with standard roll, electric roller shades with valance and electric zebra blinds.

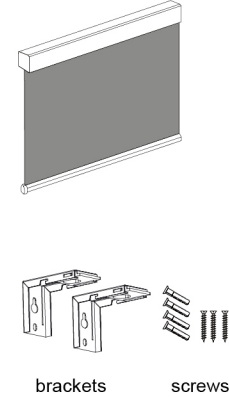
Should you have any doubts during the installation or your daily use, please contact us and our professional customer service team is standing by to support.

## Product view

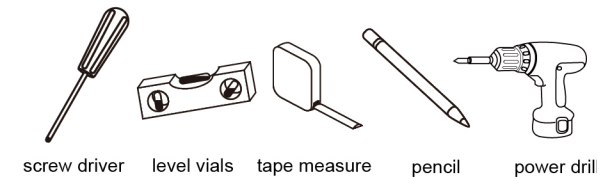
### Shades with standard roll



### Shades with valance



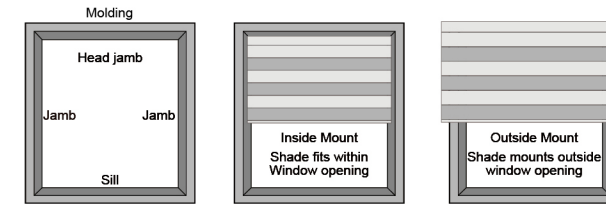
## Tools needed



## Installation by steps

### Step 1 Install the brackets

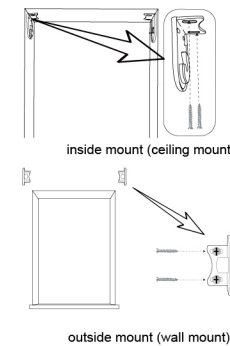
If the brackets are mounted correctly, the rest of the installation process will follow easily. To prepare for this important first step, review the mounting types and basic window terminologies illustrated below.



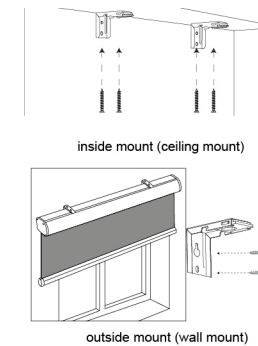
### Warning

Use the level Vial to check if the surface where the brackets will be installed is horizontal. Fill the gap between the wall and the brackets if necessary. (washers are not provided).

### Shades with standard roll

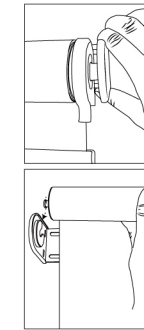


### Shades with valance

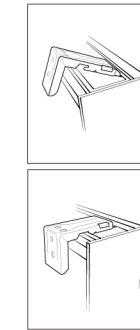


### Step 2 Install the Shades

#### Shades with standard roll

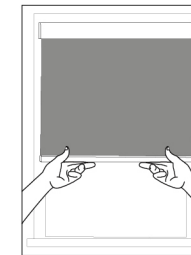


#### Shades with valance

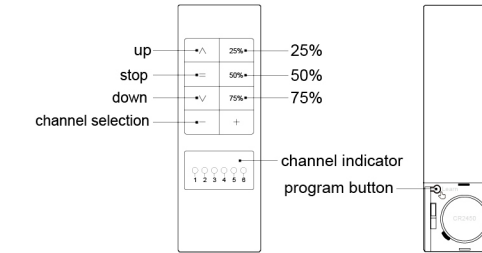


### Step 3 Installation check

- Check if the fabric is centered
- Make sure the shades is horizontal



## Basic functions of the motor and remote

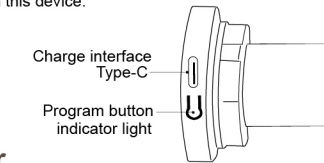


- Open the back cover and load the cell button battery (CR2450) before use.

### Warning

Safety Instructions for Motorized Shades

- Do not expose the motor or remote to moisture or extreme temperatures.
- Do not allow children to play with this device.



## ZM power motor

Product model	ZM25-EAZ	Rated voltage	DC5V
Rated current	0.9A	Rated power	6.7W
Rated torque	1.2Nm	Rated speed	25rpm
Max limit	non-stop	Noise	<38dB

## Warning

### IMPORTANT

In some cases, at the customers' request, the Upper & Lower limit positions (full UP & DOWN positions) have been pre-set before shipping. – also, a Channel Number has been assigned to each shades - therefore, it is NOT necessary to perform Steps Pairing. Set the Upper limit & Set the Lower limit below – however, we recommend that you read these to familiarize yourself with the basics of programming the motor and remote control and to fully understand the function of your motorized shades.

### Power ON/Wake up motor

(\*The motor may jog twice after each wake up, indicating that the network is not connected.)

Press and hold the motor program button for 1s, the red light comes on and the motor is now on.



### Power OFF/Sleep Mode

(\*After switching off power, the motor will not be able to receive remote signals.):

Press and hold the motor program button for 7s, the red light flashes 3 times, the motor is off.

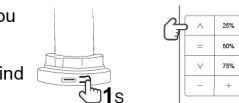


### Pairing remote

- Select a channel for the remote control you want to pair.

- Press the motor program button 1s, the blind jog once.

- Press the UP button on remote once, the blind jog again, the remote are now paired.



## Setting the upper/lower limit position

(\*Upper/lower limit setting can not be operated as a single item.)

- Press the remote program button on the back of remote once,the blind jog once.

- Press and hold the UP button on remote to rise the blind to the desired position,press the stop button to stop the blind.

- Press the remote program button again,the blind jog again.The upper limit position is saved.

- Press and hold the DOWN button to lower the blind to the desired position,press the stop button to stop the blind.

- Press the remote program button once,the blind jog.

- Press the remote program button again,the blind jog again.The lower limit position is saved.

## Warning

For shades with valance, setting the upper limits is extremely necessary to avoid the lower bar going over the top and damaging the valance brackets.

## Setting the third limit position

(\*The third limit position needs to be set after the upper and lower limit position setting)

- Press the remote program button on the back of remote once,the blind jog once.

- Press and hold the UP or down button on remote to rise or lower the blind to the desired position,press the stop button to stop the blind.

- Press the remote program button ,the blind jog.

- Press the remote program button again,the blind jog again.The third limit position is saved.

## Adjust the limit position:

- Press the remote program button on the back of remote once,the blind jog once.

- Press and hold the UP or down button on remote to rise or lower the blind to the desired position,press the stop button to stop the blind.

- Press the remote program button ,the blind jog,it's done.

## Restore Factory

- Press stop button on remote for 5s,the blind jog.

- Press the remote program button 7s,after the blind jog twice,it's done.

## Switching direction

- Press stop button on remote for 4s,the blind jog.

- Press the DOWN button on remote once,the blind jog again,it's done.

## Copy a remote/channel

Press the stop button on the old remote/channel for 5s,the motor jog.Press the UP button on the new remote/channel once,it's done.

## Delete a remote/channel

- Press the stop button on the old remote/channel for 5s,the motor jog.

- Press the remote program button on the back of remote once ,it's done.

## Convenient touch

- You can easily control your shades move to certain position by following the steps below:

- Press 25% button, the shades will move to 25% of the programed limit. 50% and 75% button works with the same step.

- Note-This works only after the Upper and Lower limits are set.

## Delete the limit position:

- Press Up or Down button to rise or lower the blind to the limit position.

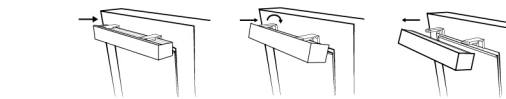
- Press remote program button 7s,the blind jog,it's done.

## Cleaning

Always clean with a low suction, hand-held vacuum or dust with a soft, clean cloth or feather duster. for dirt and stains, we suggest use a cloth, sponge or soft brush and a mild detergent.

## Unload the blind with valance

Hold the valance tight, and then push the valance forward to release the shades from the brackets and lower the valance and take the shades off from the brackets.



## Q&A

**Q: When do i need to charge my shades?**

A: When the LED flashing in red,you will need to charge your shade. Uauslly,a full charge can be used for 2-3 months and no need to be plugged in all the time.

**Q : Why my blind doesn't respond to the remote anymore?**

A : 1. Please check if the battery inside the remote is low power. Change the battery and try again.

2. Please try to pair the motor with the remote again. (sometimes the pairing is lost due to some unknown RF interference)

**Q : When I click the remote button, why does the blind move only a few centimeters?**

A : You need to first pre-set the upper and lower limits. After the setting, with only one click, it can go to 25%, 50%, 75% automatically. with a long press of 25% 50% 75% button.

**Q : Can I use the blinds outdoors?**

A : The motor is not water-proof. It's NOT suitable for outdoor use.



## Loudspeaker box operating instructions

Distribution network:

After saying"Alexa, discover devices", the following interface appears on the speaker, then press the motor four times for short presses and once for long presses (four short presses within 1s, a long press for more than 3s until the green light flashes).

Control:

The following interface appears to indicate successful network distribution, you can use voice control (the figure indicates that the device name is "Window")Open "Device Name"Close"Device Name"Turn off "Device Name"Turn on"Device Name"Open"Device Name"to 65%.

You must turn on your phone's Bluetooth function before connecting to Alexa



## Trouble shooting

Item	Problem	Matter	Shooting
1	The motor doesn't work and no any move	A. Power is cut off	A.Switch it on by button
		B.Shortage voltage protection	B.Start the motor after charging it for 6 hours
		C.Incorrect installation leads to motor stucking	C.Check and make sure all parts are intalled properly
2	The motor stops suddenly during operation	A.Shortage voltage protection	A.The motor will resume to work after being charged
		B.Protect the motor when encounter obstacle	B.Check if there is something stuck or overloading
3	Loudspeaker can not be connected with motor	A.The loudspeaker does not have WIFI turned on	A.Turn on the speaker's WIFI
		B.Motor is connected by other speakers	B.Reset motor and connect again



Please scan the QR code for video tutorials on Youtube